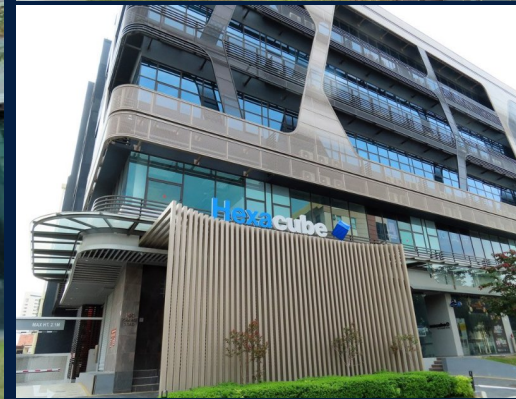


# FOR SALE

COMMERCIAL - RETAIL  
258SQFT (24SQM) / S\$ 784,000

+65 9277 7077



## COMMERCIAL - RETAIL HEXACUBE, 160, CHANGI ROAD, SINGAPORE 419728

- LISTING ID: SGLA70502927
- TENURE: FREEHOLD
- TITLE: N/A
- SIZE BUILT-UP: 258SQFT (24SQM)
- SIZE LAND: N/A
- NO. OF FLOORS: N/A
- FLOOR/LEVEL: N/A - N/A
- PARKING SPACES: N/A
- LAYOUT TYPE: N/A
- FACING: N/A
- VIEWING: N/A
- SELLING PRICE: S\$ 784,000 **NEGOTIABLE**  
3,038PSF (32,708PSM)
- COMPLETION YEAR: N/A
- CONDITION: N/A
- LISTING DATE: NOV 12, 2020

### 160 CHANGI ROAD, #01-11 HEXACUBE

Hexacube located at Changi is a freehold commercial building, which consists of 5 stories and a basement. With a total of 73 units, it is made up of a mixture of shops, restaurants and offices. It is a spanking new landmark that merges work and pleasure for a truly exceptional experience with easy access to the airport, expressways and MRT station as well. - Retail Shop - Feehold - Commercial

#### EXTERIOR FACILITIES

- 24 Hours Security

VISIT THIS PROPERTY AT: <https://www.christinelaiproperties.com/property/SGLA70502927>



### CHRISTINE LAI - HUTTONS ASIA PTE LTD

3 Bishan Place #05-01 CPF Bishan Building  
D20, 579838, Singapore

+65 9277 7077  
WhatsApp Me

christine\_lai@ymail.com

L3008899K  
R012818C

<https://www.christinelaiproperties.com>



Scan QR Code

**Huttons**® Call for Viewing  
The Agency of Choice +65-92777077